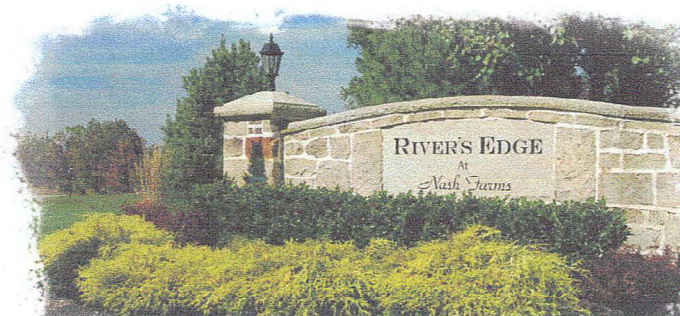


*Rivers Edge  
at Nash Farms  
Price List*



Homesite	Acreage	Price
1	1.0058	\$137,000
2	1.2774	<b>SOLD</b>
3	1.8974	<b>SOLD</b>
4	1.9664	<b>SOLD</b>
5	1.9417	<b>SOLD</b>
6	1.3080	<b>SOLD</b>
7	1.4497	<b>SOLD</b>
8	1.1440	<b>SOLD</b>
9	1.1239	<b>SOLD</b>
10*	1.0688	\$137,000
11	1.0344	<b>SOLD</b>
12	1.0753	<b>SOLD</b>
13	1.1585	<b>SOLD</b>
14	1.1829	<b>SOLD</b>
15	1.1232	\$146,600
16	1.0822	\$146,600
17	1.1297	\$149,000
18	1.0118	\$149,000
19	1.1873	\$149,000

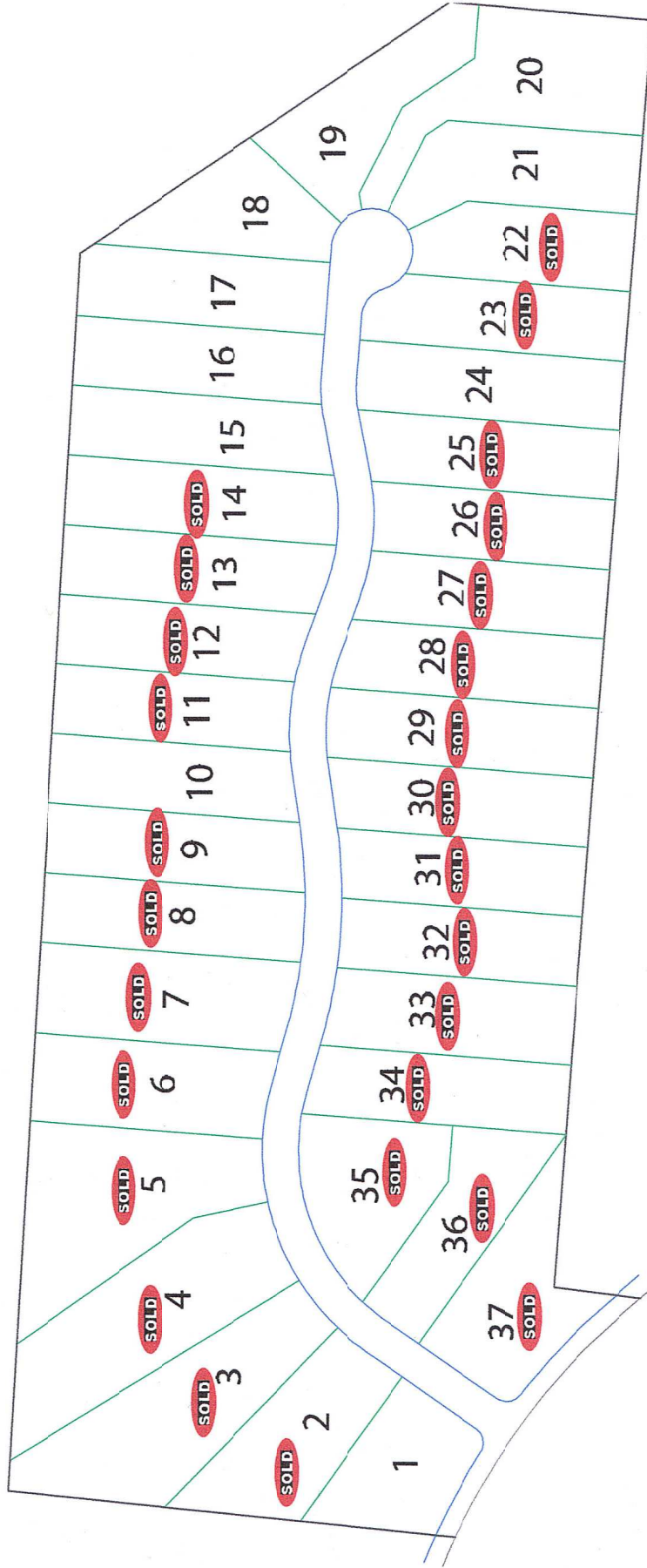
Homesite	Acreage	Price
20	1.6472	\$149,000
21	1.1956	\$149,000
22	1.0296	<b>SOLD</b>
23	1.1178	<b>SOLD</b>
24	1.1578	\$146,900
25	1.1037	<b>SOLD</b>
26	1.0441	<b>SOLD</b>
27	1.0636	<b>SOLD</b>
28	1.1405	<b>SOLD</b>
29	1.1767	<b>SOLD</b>
30	1.1315	<b>SOLD</b>
31	1.0730	<b>SOLD</b>
32	1.0504	<b>SOLD</b>
33	1.2118	<b>SOLD</b>
34	1.1293	<b>SOLD</b>
35	1.2018	<b>SOLD</b>
36	1.0836	<b>SOLD</b>
37	1.2778	<b>SOLD</b>



**440.487.4021**

Revised: March 26, 2009

*River's Edge at Nash Farms | Site Plan*



**440.487.4021**

Revised: March 6, 2009